



Central to a Legacy of Excellence

Opening Meeting 2024

Welcome

Dr. Stephen Adair, Faculty Senate President
and Professor of Sociology



Moment of Silence

In memoriam





State of the University

Dr. Zulma R. Toro, President
Central Connecticut State
University





CENTRAL



Honoring Central Faculty

2023 – 2024 Excellence
in Teaching Award

**Dr. Jessica Smith,
Associate Professor,
Biomolecular Science**

2023 – 2024 Excellence
in Teaching Award

**Alana Ledford, Adjunct
Professor, Marketing**

Developments at Central

Central a financially sustainable, student-centered institution and a model for our state and beyond.

Academics

Student Support

Applied Learning + Industry & Community Partnerships

Physical & Technological Infrastructure



Artificial Intelligence



Central to a Legacy of Excellence

Academics

NEW ACADEMIC PROGRAMS

15+ new programs added at the undergraduate and graduate levels including:

- Accelerated Bachelor of Science in Nursing (ABSN)
- Master of Social Work (MSW)
- BS/BA in Computer Science with a Concentration in AI
- Minor in The Application of Artificial Intelligence
- BS/BA in Climate Change Studies
- Cultural Resource Management (CRM) Undergraduate and Graduate Certificate
- Master of Arts in Criminal Justice Administration (HyFlex)

NEW ACCELERATE CENTRAL PATHWAYS

Undergraduate Program		Graduate Program
Business BS	➔	Master of Business Administration (MBA)
Business Analytics BS	➔	Master of Business Administration (MBA)
Computer Science BA	➔	Computer Information Technology MS
Computer Science BA	➔	Software Engineering MS
Computer Science BS	➔	Computer Information Technology MS
Computer Science BS	➔	Software Engineering MS
Cybersecurity BS	➔	Software Engineering MS
Cybersecurity BS	➔	Computer Information Technology MS
Physics BS	➔	Master of Business Administration (MBA)



SCHOOL OF EDUCATION

Formerly the School of Education & Professional Studies

Focus on PK-12 education programs, elevating Central's reputation as the Teachers College of Connecticut.

Opportunities to:

- Address teacher shortages
- Increase minority teacher recruitment through collaborations and partnerships
- Expand external funding opportunities and relationships

Student Support

THE SOPHOMORE TEA

Discussions between students and faculty/staff about being a Sophomore at Central

- College Tips
- Academic Advising
- Careers
- Student Wellness



SUCCESS CENTRAL

Support student success through peer mentoring

- First and second year students paired with a junior or senior
- Mentors help students with time-management, study tips, school-life balance, and more



More Student Support

Formerly Early Alert

- Approachable system that resonates better with students and fosters increased engagement in response to reported concerns
- Tracks email and text interactions between students, academic departments, and advisors
- **Kudos** and **Concerns** can be submitted by anyone on campus

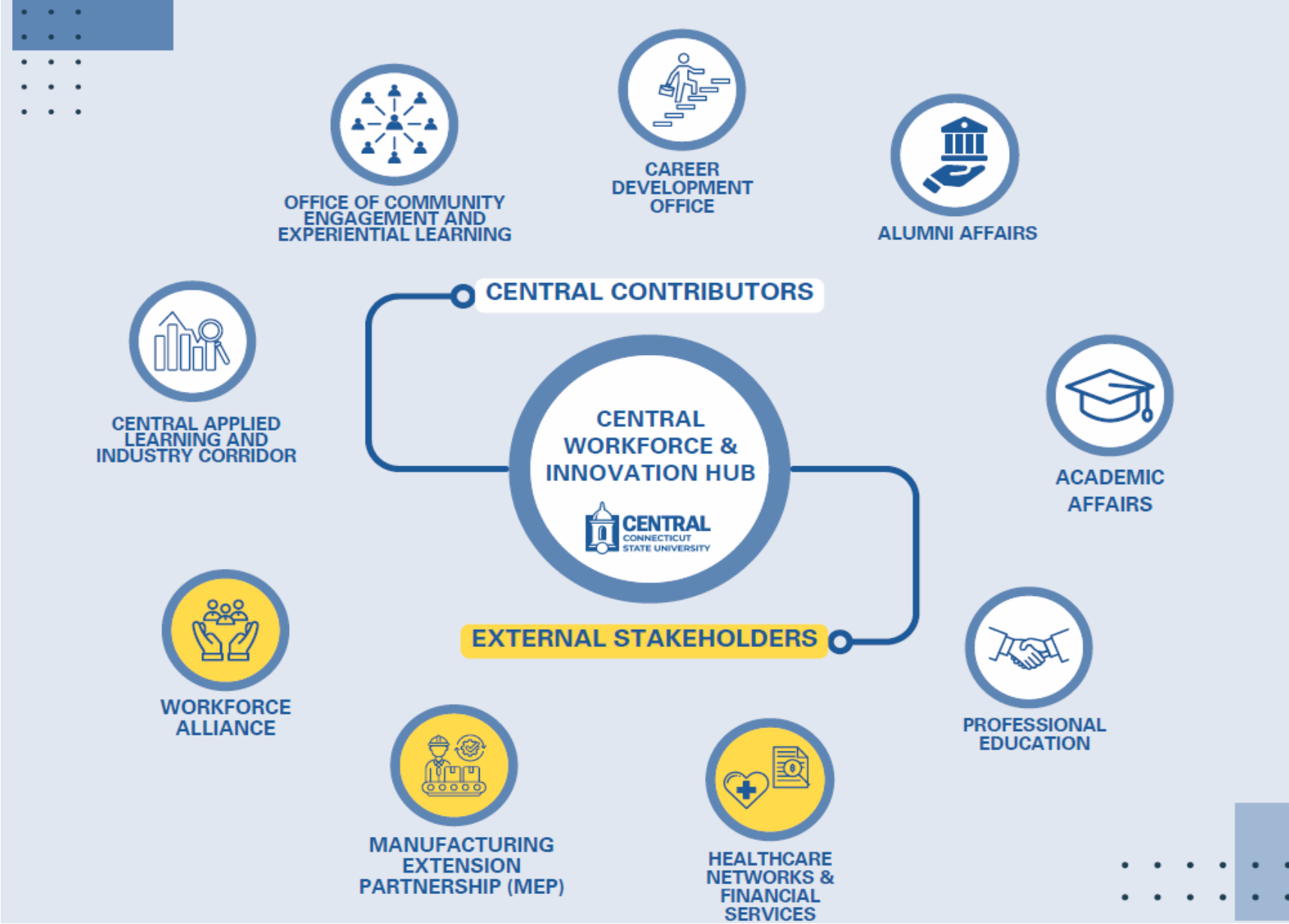


New Expectations for Central

- Applied Learning or Experiential Learning Opportunities Connecting Knowledge and Skills to the Real World.
- Higher Education Institutions Partners in Solving Societal Challenges.

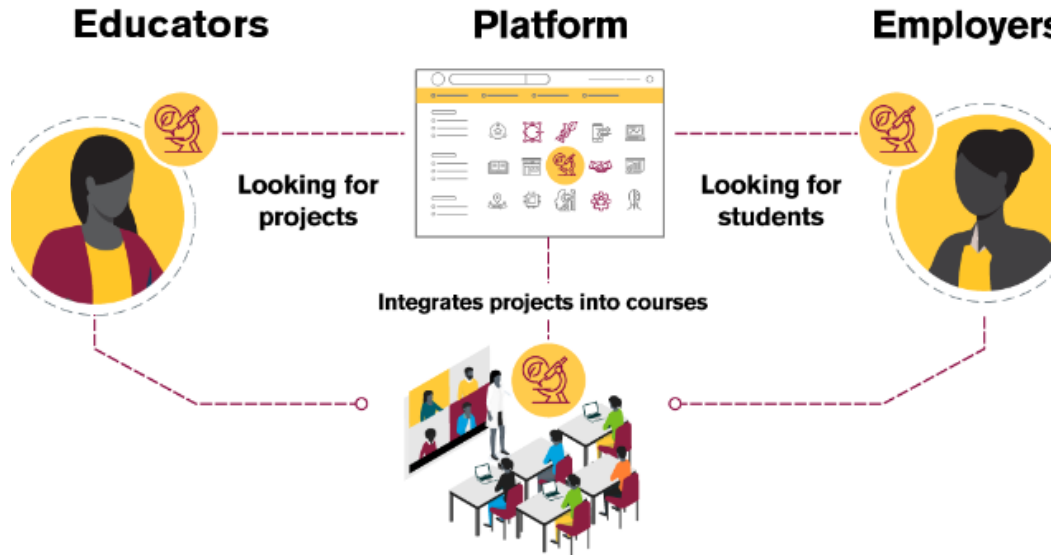


Central Connecticut Workforce and Innovation Hub at New Britain



Central Applied Learning and Innovation Corridor (CALIC)

Will create an ecosystem in which:



- Hands-on learning will be part of a scaffolded curriculum
- Capstone courses guided by industry needs
- Co-op and experiential learning opportunities for college students
- Enrichment and professional education for working individuals
- Research inspired by industry challenges
- Simulation of industry scenarios
- Basic research will be pursued
- Students and faculty will be engaged with the community!

GOALS FOR THE HUB:

To solve the needs of the region in workforce development, innovation and experimentation.

To serve as a clearinghouse to maximize industry and community partner engagement with the university.

To create more experiential learning opportunities for all students from colleges/schools to enhance their educational experience & support in their career development

To provide a one-stop shop for industry, community partners, and internal constituents to share knowledge, networks, and opportunities.

To serve as employer of record to hire students to work with industry and community partners.

To assist the manufacturing, healthcare, financial and insurance services industry sectors with productivity increases, product/service development, and the creation of new enterprises.

Every student will graduate with two experiential learning opportunities



STUDENTS CRAFT LITERACY KITS FOR NEW BRITAIN YOUTH WITH THE UNITED WAY
MLK Day of Service, 2024

• Why this is important:

- Drives engagement and retention
- The nature of these high impact activities puts students in circumstances that essentially demand they interact with faculty and peers about substantive matters
- Increases the likelihood that students will experience diversity through contact with people who are different than themselves
- Provides opportunities for students to apply their learning in different settings, on and off campus
- Can be life changing to participate in service learning, join in a community-engaged course, conduct research with a faculty member, or complete an internship or other field experience



a Comprehensive
Solution for Promoting
and Tracking Community
Engagement &
Experiential Learning



Faculty:

coordinate service
learning, track research
and collect student
reflections



Staff:

provide opportunities
& monitor impact



Students:

discover opportunities &
track progress



Community Partners:

connect with the
community to recruit
volunteers & donors



Alumni:

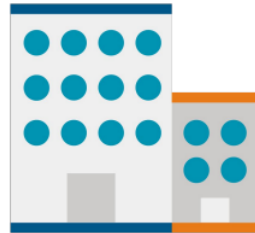
give back to community &
engage in service
opportunities

Comprehensive Learners Record

Parchment CLR (Engagement Record) Services Delivers on the Promise of the Holistic Record



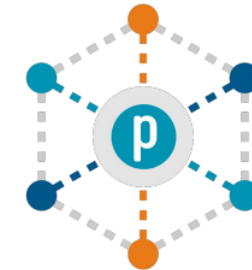
Better Align Learner Experiences to Workforce Needs



Guide All Learners Towards Post-Academic Success



Drive Retention by Showing Progress Towards Goals



Learner Adoption Using Institutionally Proven Processes

Educational Success



PROFESSOR SARAH STOOKEY AND MANAGEMENT AND ORGANIZATION STUDENTS
EMPTY BOWLS, MAY 2024

- **Coordination, collaboration, and consistency** are key to the success of this model

- We need and want your help in supporting our students' applied learning journey
- We can foster real returns on enrollment and retention
- The opportunities and innovative solutions to helping this initiative succeed are endless!



175
YEARS



Central to a Legacy of Excellence

Physical Infrastructure

Sal Cintonino, VP Operations



JLG LIFT

Emergency

STATE OF CONNECTICUT
DEPARTMENT OF LABOR
OFFICE OF SAFETY AND HEALTH
100 STATE STREET, SUITE 1000
HARTFORD, CT 06103
TEL: 860-424-3200
WWW.STATE.CT.US/OSHA

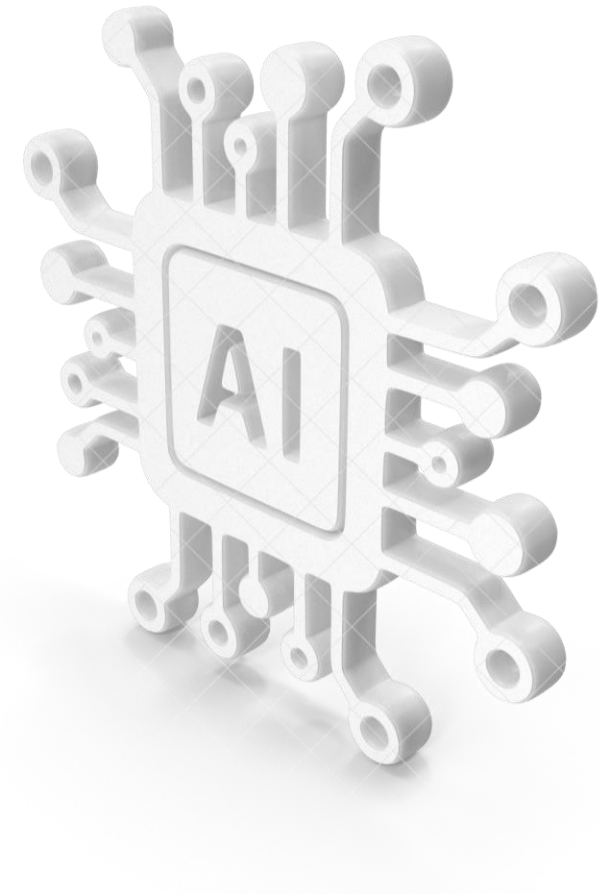


Central to a Legacy of Excellence

Artificial Intelligence at Central

Central Artificial Intelligence Strategy

By incorporating AI-related content across disciplines, establishing AI-focused academic programs, and encouraging interdisciplinary research and learning opportunities, the university will strengthen its position as a leader in AI education and research empowering students and faculty to explore the transformative potential of artificial intelligence.



Artificial Intelligence

Interdisciplinary approach to support everyday applications

Criminal Justice
Graphics Information Systems
(GIS)
Healthcare
Project Management
Music
Art & Design
Accounting & Finance



First in the Country Holographic Synthetic Human

Enclosure Installation (10/10)
Synth Human (11/20)



AI Task Force Areas of Focus

- Integration of AI across our curriculum
- AI ethical and student considerations
- Collaborations with the Center for Teaching and Innovation (CTI) and IT

Fall 2024 Initiatives

Faculty & Staff AI Framework

Framework to guide faculty and staff in adopting and implementing AI technologies in their teaching, research, and administrative tasks.

Student AI Guide

A student-focused guide to help educate and empower students to understand, utilize, and navigate the AI landscape during their academic journey.

Microsoft Co-Pilot Training

Hands-on training sessions for faculty, staff, and students on the effective use of Microsoft's Co-Pilot for Office 365 AI assistant to enhance collaboration.

AI Engagement & Collaboration Events

A series of AI-focused events, workshops, and hackathons to foster cross-disciplinary collaboration, knowledge sharing, and exploration of AI applications across the university



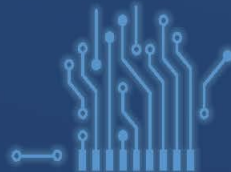
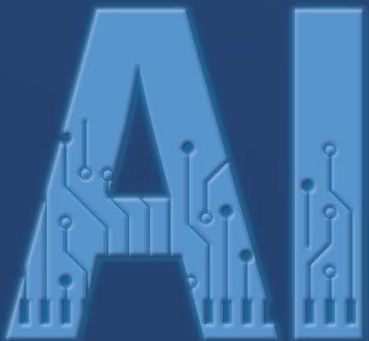


save the date

**ARTIFICIAL INTELLIGENCE (AI)
&
VIRTUAL REALITY (VR)
CONFERENCE**

**FRIDAY, OCT. 04
8:30 AM–4 PM**

**Student Center, Alumni Hall
Central Connecticut State University**



AI Conference – Save the Date Oct. 4.

- Topics and discussions will explore how AI can revolutionize and enhance both educational practices and workforce skills development.

Thank you, Academic & Administrative Faculty!

- Dr. Lourdes Casas
- Sharon Clapp
- Dr. Michael Gendron
- Thom King
- Dr. Kimberly Meyer
- Tina Rivera
- Conferences
- Guest Speakers
- Resources
- Lunch 'n Learns
- Training
- Articles & Research library





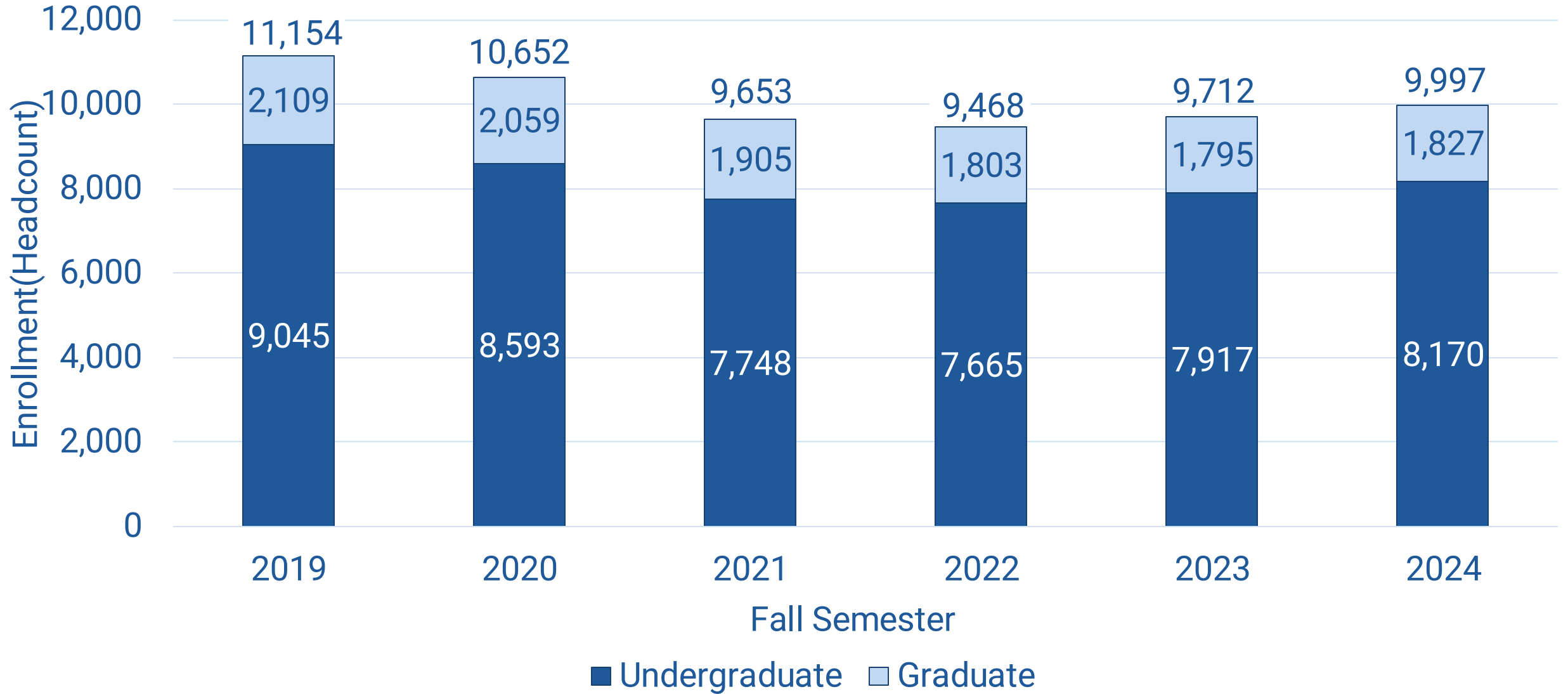
175
YEARS



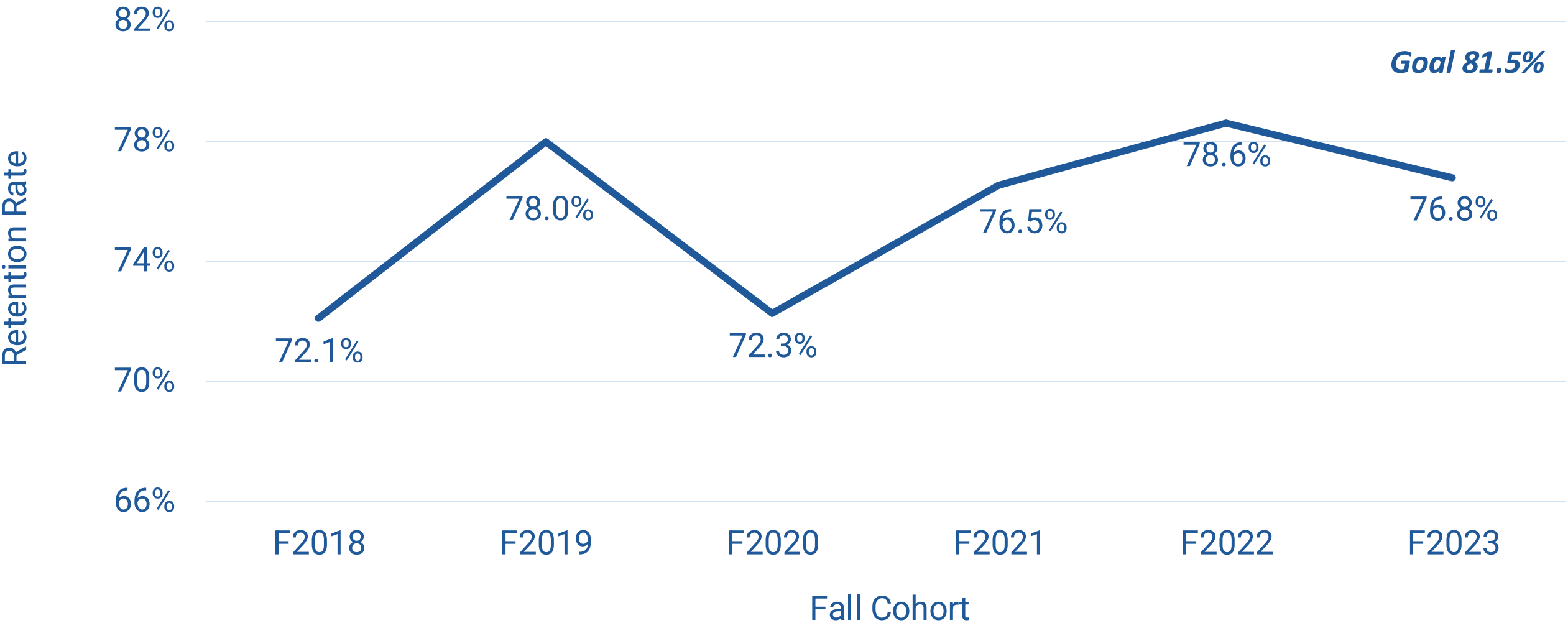
Central to a Legacy of Excellence

Enrollment, Retention and Housing Occupancy

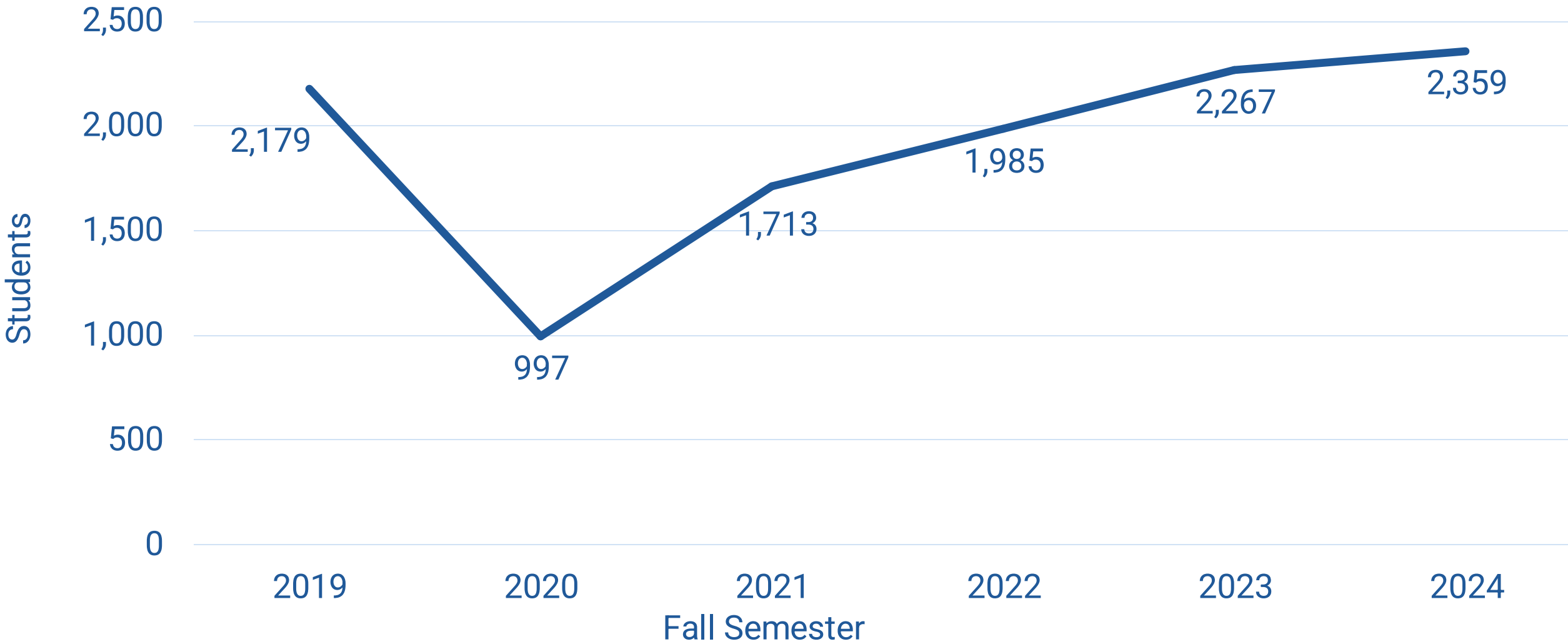
Enrollment By Student Level



Retention Rate of First-time Full-time Students: Returning the Following Fall Semester



Number of Students Living on Campus





Central to a Legacy of Excellence

Budget Update

American Rescue Plan Act (ARPA) – One-time Funding

FY22 One-Time Funding	FY23 One-Time Funding	FY24 One-Time Funding	FY25 One-Time Funding	FY26 One-Time Funding
\$12,664,005	\$37,720,121	\$35,703,457	\$18,421,172	\$0

Tuition & Fee Increases

FY21	FY22	FY23	FY24	FY25
BOR 2/6/2020	BOR 3/25/2021	BOR 3/24/2022	BOR 10/20/2022	BOR 12/14/2023
4%	0%	5%	3%	5%

FINANCIAL POSITION

End of Year Balance

	FY 2019	FY 2020	FY 2021	FY 2022	FY 2023	Estimated FY 2024	Estimated FY 2025*
	\$2,614,063	\$238,624	\$0	\$4,947,005	\$13,304,204	\$7,570,293	\$10,298,925

*Assumptions: Additional 2% increase in enrollment for Fall 2024 and 2,200 Students in dorms.

International Education



Ghana, Africa



Indonesia



Spain





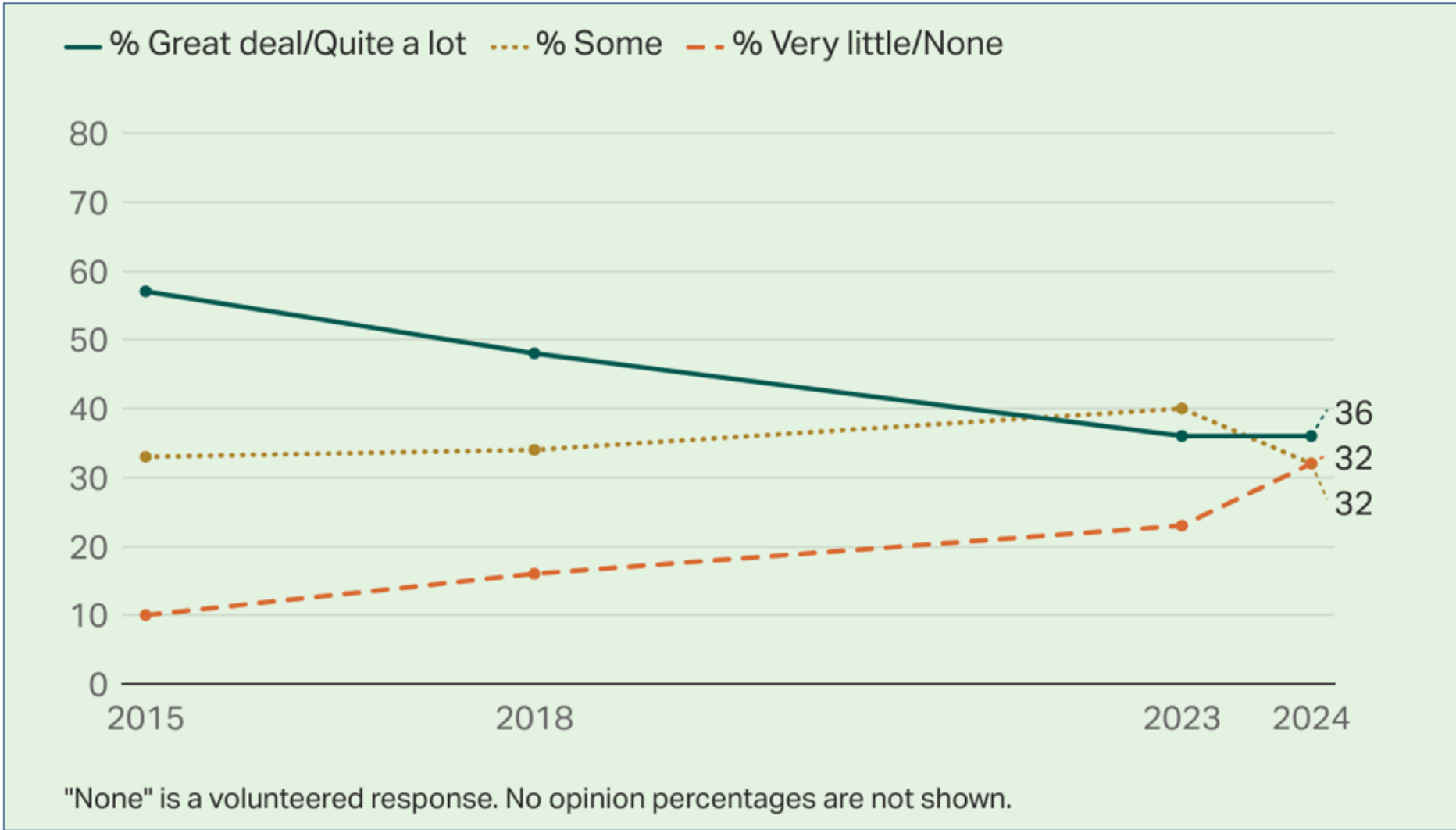
Challenges

Challenges

- Public Perception of Higher Education



Confidence In U.S. Higher Education



Please tell me how much confidence you, yourself have in higher education:

- A great deal?
- Quite a lot?
- Some?
- Very little?

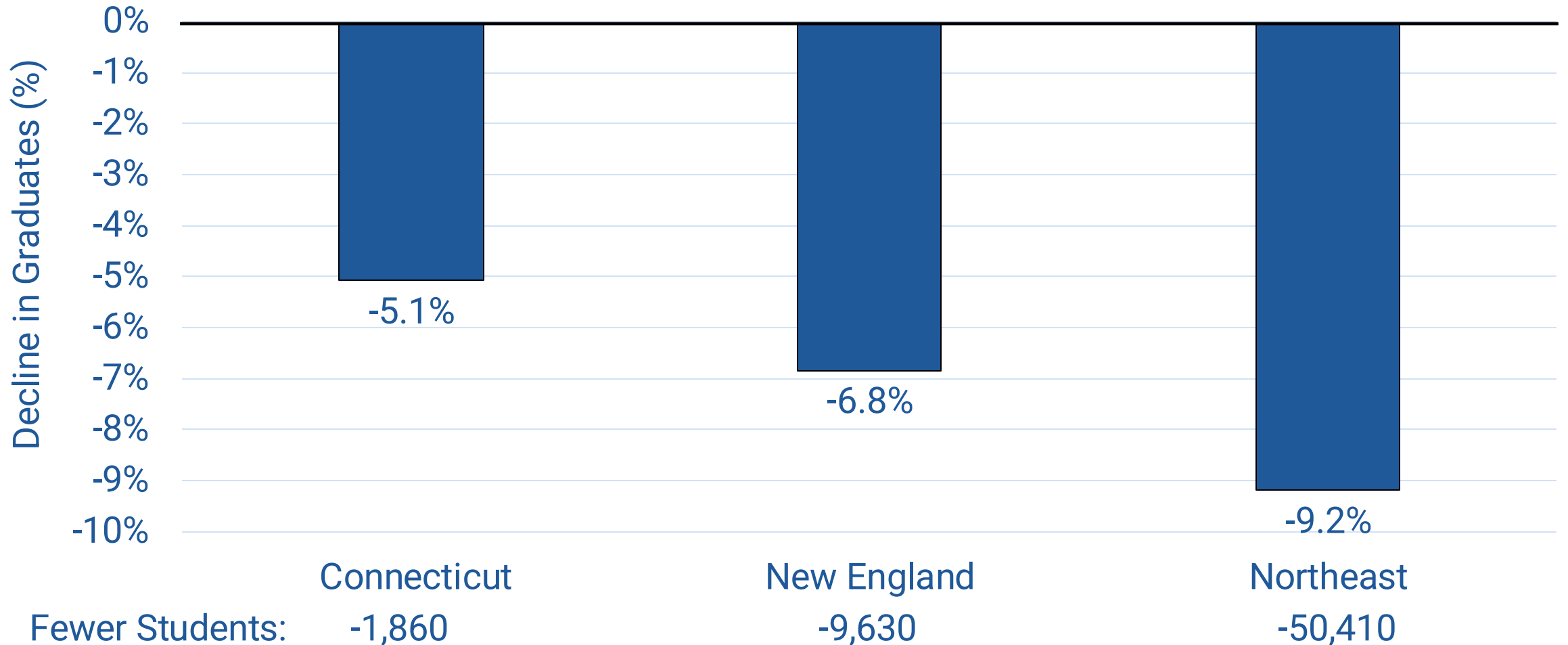
Source: Gallup Survey (June 2023)

Challenges

- Public Perception of Higher Education
- College Age Demographic Change



Projected Decline in Students Graduating from Public High Schools (2023-24 to 2031-32)



Source: Digest of Education Statistics, 2023, Table 219.20

Challenges

- Public Perception of Higher Education
- College Age Demographic Change
- Impact of Artificial Intelligence
- Financial Support from State





Central to a Legacy of Excellence

Faculty and Staff Opportunities

Opportunities

- **Two experiential learning experiences for every student**
- **Professional development for faculty and staff**
- **International travel for faculty and staff**
- **Funding for new ideas and creative endeavors**





175
YEARS



Central to a Legacy of Excellence

Priorities for Academic Year 2024 -2025

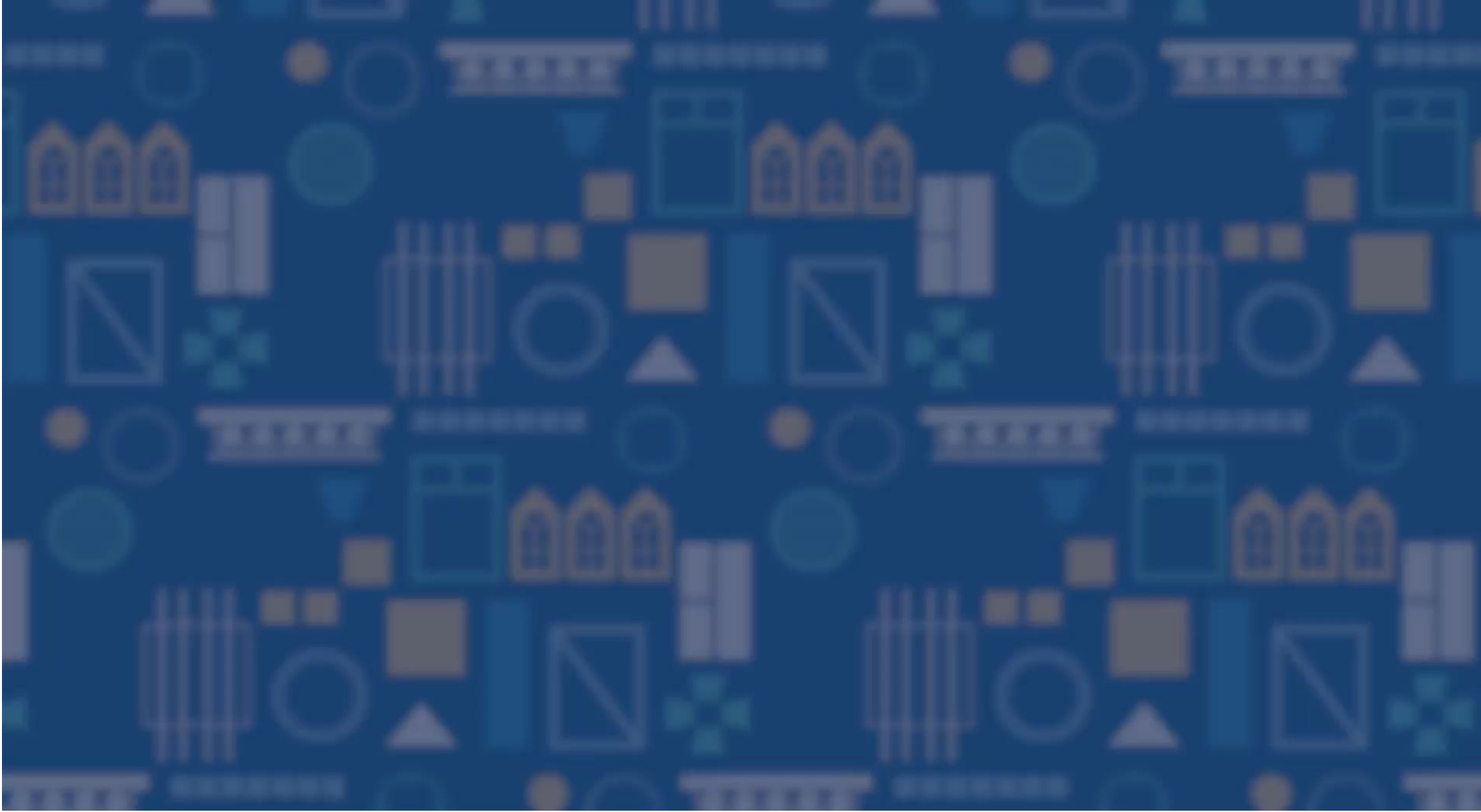
Priorities Academic Year 2024 - 2025

- **Consideration of Taskforce's Recommendations on Academic Departments and Schools**
- **Reimagine Center for International Education**
- **Diversify /strengthen revenue producing initiatives to support strategic efforts**
- **Implement HUB**
- **Graduate Studies at Central**
- **Expand CHRS & Community Health Education Clinic**



Central to a Legacy of Excellence

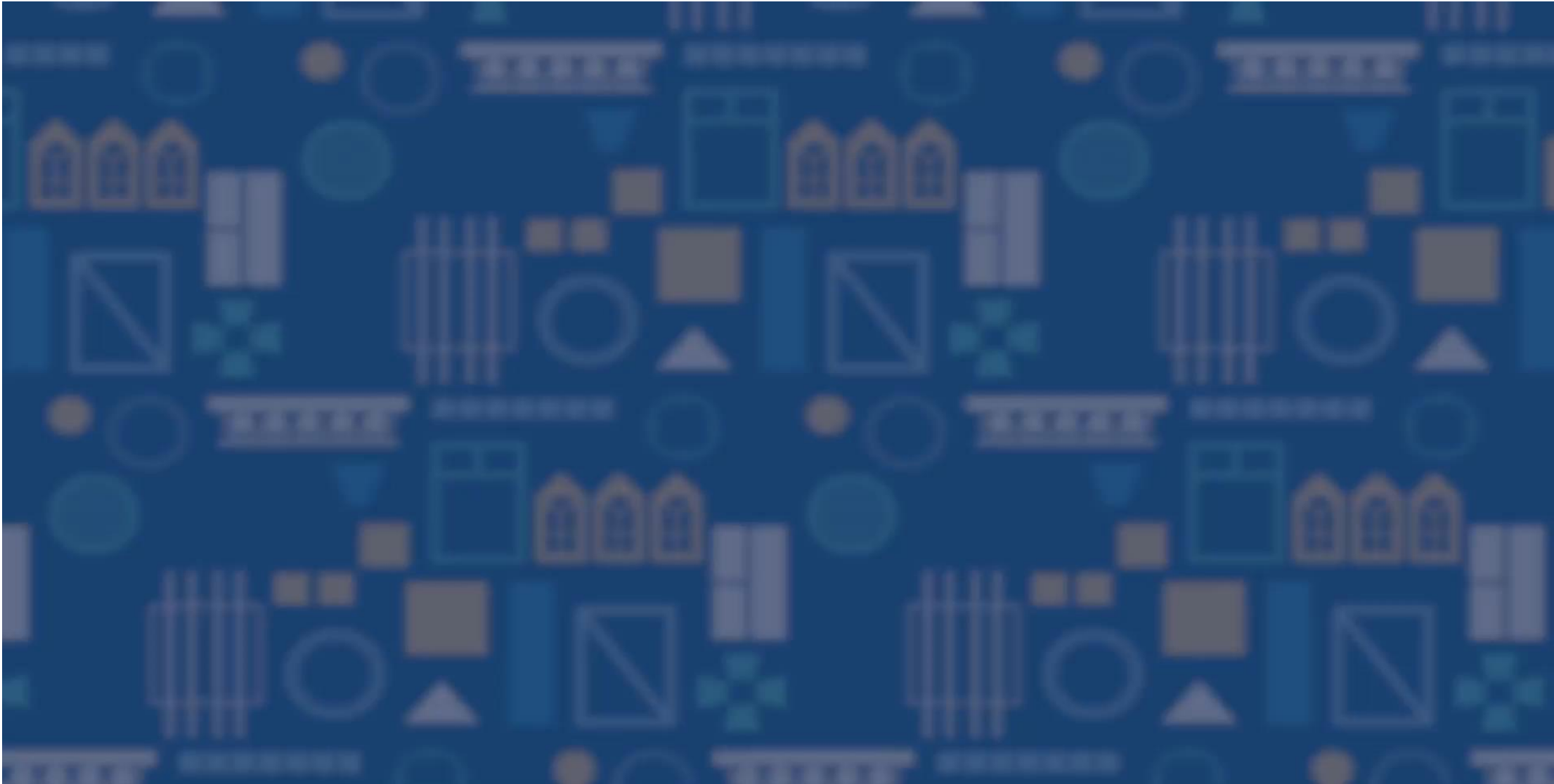
Distinguished Service Award





2024

**CENTRAL PRESIDENT'S
DISTINGUISHED SERVICE
AWARD**



A stack of several books with different colored covers (red, blue, purple) is shown in the background, slightly out of focus. The books are stacked horizontally, with some overlapping. The background is a light blue gradient.

Board of Regents Faculty Awards

Nominate someone or yourself for the Board of Regents Faculty Awards



A Legacy of Excellence



What It Means To Be Central to a Legacy of Excellence

Thank You!



Opening Meeting 2024

Jodi Latina, Associate Vice President of Communications and Media

Welcome

Dr. Stephen Adair, Faculty Senate President

- Moment of Silence and in Memoriam video

State of the University Presentation

Dr. Zulma R. Toro, President

- 175-th Anniversary celebrations video
- Honoring our Faculty
- Developments at Central
- Distinguished Service Award
- Special Legacy of Excellence video presentation

Light Refreshments