



**Queen Margaret  
University**  
EDINBURGH

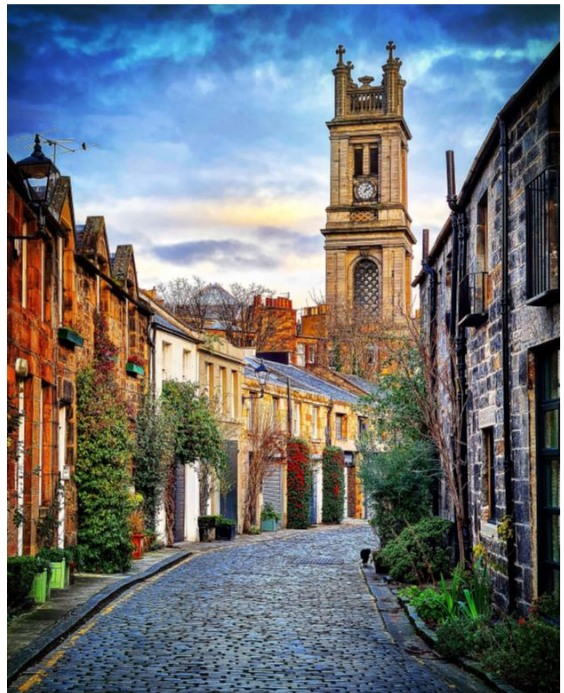
**Exchange & Study Abroad  
Opportunities at  
Queen Margaret University**

**Laura Stevenson  
International Office**





# Edinburgh – Scotland's Capital





# Why Choose QMU

- Founded in 1875
- Modern campus opened in 2007
  - Student centred
- Located to the east of Edinburgh city centre
  - Under 10 minutes by train
  - Regular buses to the city centre, including night buses
- Small institution where you are a name not a number (around 5000 students)



# Academic Calendar Options

- Single Semester
  - Semester 1
    - September to December
  - Semester 2
    - January to April/May
- Academic Year
  - September to April/May
- Calendar Year
  - January to December with summer break (combine with work/internship)



# School of Arts, Social Sciences & Management

- Business Management (with Analytics, Digital Marketing, Finance, and Human Resource Management)
- International Hospitality, Tourism & Events Management
- Drama
- Theatre & Film
- Film & Media
- Media & Communications
- Digital Marketing & Public Relations
- Public Relations & Marketing Communications
- Psychology
- Psychology & Sociology
- Sociology
- Education Studies





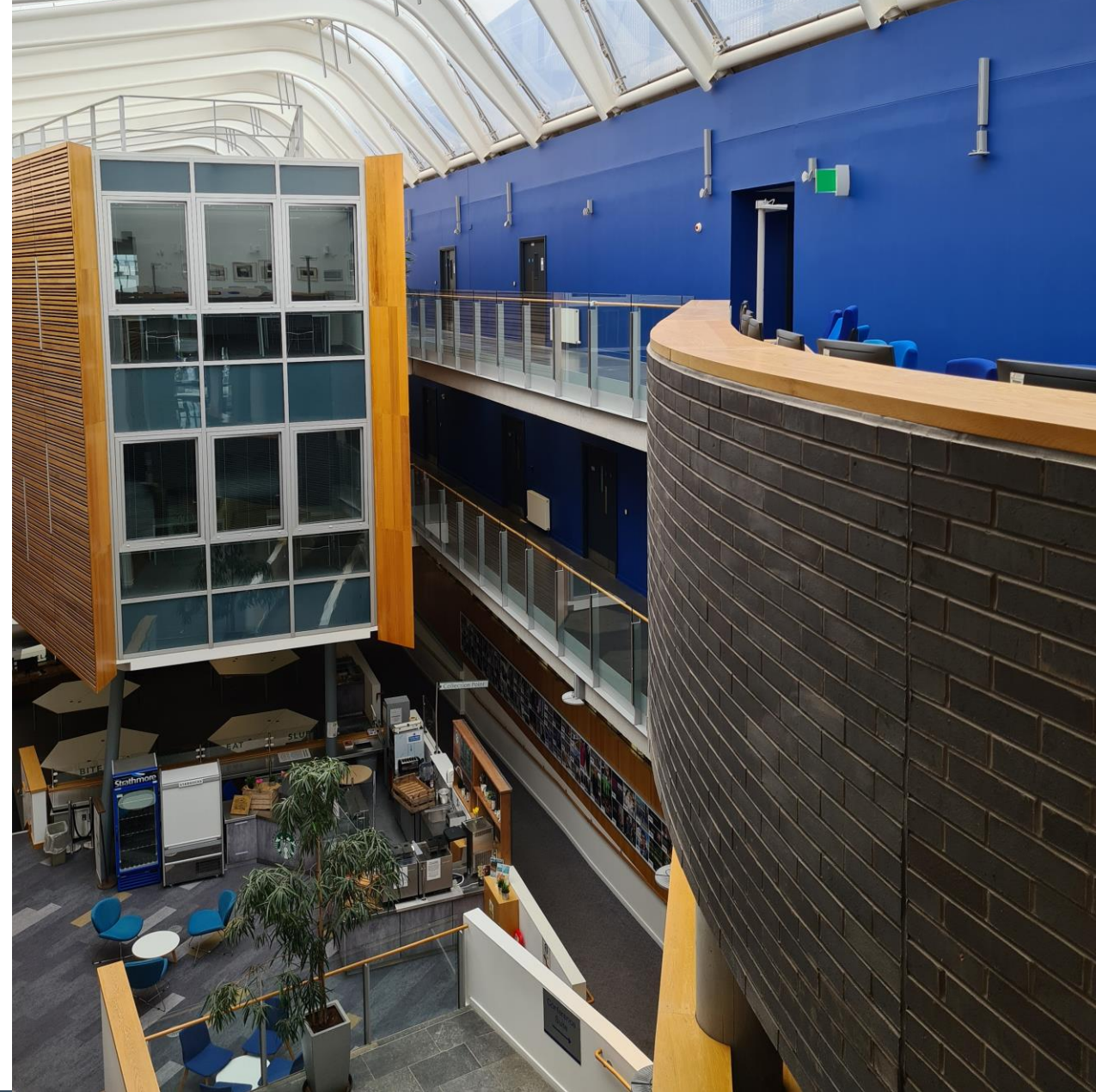
# School of Health Sciences

- Nutrition



# Programme of Study

- Select modules across multiple programmes
- Full time course load 60 SCOTCAT credits per semester (Equivalent to 30 ECTS)
- Modules available subject to them running, availability of places, level of entry offered, and timetabling
- Module information can be obtained by emailing [StudyAbroad@qmu.ac.uk](mailto:StudyAbroad@qmu.ac.uk)



# How to Apply

- Online application to QMU
- Upload supporting documents to application
  - Transcript, list of modules currently studied that are not yet on transcript, proof of English language proficiency (if English is not your first language), one academic reference, and a copy of your passport data page.
- Applications cannot be considered until all supporting documents have been received. Any documents missing at time of application should be sent to [StudyAbroad@qmu.ac.uk](mailto:StudyAbroad@qmu.ac.uk)
- No set deadline to apply





# Accommodation

- Located next to academic building
- Standard or Premium Rooms
- All rooms single, and en-suite
- Shared kitchen/living space in each apartment
- 3-6 students per apartment



# Student Life

- **Students' Union**
  - Welfare
  - Sports and societies
- **Res-life programme**
  - Pastoral care
  - Social events programme
- **Sports Centre**
  - Affordable membership fees
  - Sports hall, soccer astroturf, gym, weights room, classes





# Finance

- Study Abroad tuition fees:
  - £9250 - Academic Year
  - £4625 - Single Semester
- Accommodation
  - £139-£170 per week  
(2024/25) (2025/26 TBC)



# Immigration

- Single semester
  - Visitor route
  - <https://www.gov.uk/standard-visitor/visit-to-study>
  - <https://www.gov.uk/check-uk-visa>
- Academic / Calendar Year
  - Student route
  - <https://www.gov.uk/student-visa>





# More information

- International Office
  - [StudyAbroad@qmu.ac.uk](mailto:StudyAbroad@qmu.ac.uk)
  - <https://www.qmu.ac.uk/study-here/international-students/exchanges-and-study-abroad/>

